

Advanced Engulfing Bar Breakout with Trend - Expert Advisor

EURUSD (Hour, 4 Hour and Daily) Results Summaries

- Summaries below used data from **back test results** provided on the website for each pair and time frame. (5 year back test)
- Optimization of EA Parameters were used to maximize **Expectancy** and **Profit Factor** and minimize draw down. This is why trade frequency appears low. EA can be optimized to increase trade frequency but at the expense of profitability and expectancy. The EA can be optimized and run effectively on lower times as well (**15 Minute** and **30 minute** charts) to increase trade frequency.
- We suggest running the optimized EA on several pairs and time frames to increase trade frequency. This is shown in the chart below where the EA was run over the **Hourly, 4 Hour and Daily** time frames for the pair shown. We also recommend running the EA's with the **Trade Confirmation** function turned **ON**, to allow the user to evaluate the trade set ups identified for other aspects associated with their trade plan.
- Please note that the EA has a **Move to Breakeven** function. There are several trades shown in back testing results which have closed at or very close to break even (\$1-\$2 profits or losses). These were not shown in the summaries. only trades which had a more substantial impact on capital. This means the trade frequency is higher than shown. Many of those break even trades could be profitable if the user incorporates some trade management once in the trade such as trailing stops or providing "buffers" into the move the break even.
- **Optimization was done at 1% risk per trade.** Results shown are compounded within the backtest results for each pair in a time frame. The results summary doesn't take into account compounding by running multiple time frames for the same pair. This could have a significant positive impact on results over the backtest period.
- The result summaries below are for the **Engulfing Bar Breakout Expert Advisor** for the pairs and time frames shown.

EURUSD

Engulfing Bar Trend

EA Risking 1% per Trade
\$10,000.00 Starting Balance
EURUSD

	2014			2015			2016			2017			2018		
	HR	4HR	Daily	HR	4HR	Daily	HR	4HR	Daily	HR	4HR	Daily	HR	4HR	Daily
January				\$737.00	\$312.00	\$1,405.00					\$19.00				\$935.00
February	\$4.00						-\$89.00	-\$56.00						-\$2.00	
March				\$479.00	-\$3.00	\$4.00	\$304.00							-\$6.00	
April				\$4.00	\$2.00	\$12.00									
May				\$452.00				-\$79.00					\$482.00		
June							-\$87.00	-\$110.00			\$563.00				
July				\$5.00		\$3.00		\$12.00							
August					\$785.00										
September															
October	-\$66.00	\$1,156.00	\$1,082.00												
November						\$9.00	\$260.00	\$44.00	-\$171.00					\$4.00	
December									\$12.00					-\$104.00	\$588.00
	-\$62.00	\$1,156.00	\$1,082.00	\$1,677.00	\$1,096.00	\$1,433.00	\$388.00	-\$189.00	-\$159.00	\$0.00	\$582.00	\$0.00	\$482.00	-\$108.00	\$1,523.00
	\$2,176.00			\$4,206.00			\$40.00			\$582.00			\$1,897.00		
	Annual % Gain Combined HR, 4HR, Daily21.76%			Annual % Gain Combined HR, 4HR, Daily34.54%			Annual % Gain Combined HR, 4HR, Daily0.24%			Annual % Gain Combined HR, 4HR, Daily3.54%			Annual % Gain Combined HR, 4HR, Daily11.16%		



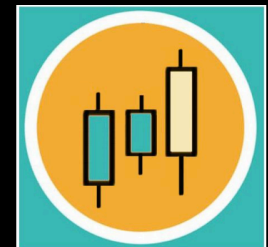
\$8,901.00 5 Year Profit
89.01% 5 Year Gain
(capital compounded annually)

GBPUSD

Engulfing Bar Trend

EA Risking 1% per Trade
\$10,000.00 Starting Balance
GBPUSD

	2014			2015			2016			2017			2018		
	HR	4HR	Daily	HR	4HR	Daily	HR	4HR	Daily	HR	4HR	Daily	HR	4HR	Daily
January															
February					-\$3.00									-\$3.00	-\$5.00
March															
April															
May															
June					\$267.00						\$318.00				
July							\$862.00								-\$19.00
August															
September			-\$145.00								\$311.00				
October							\$2,087.00								
November															
December			\$1,128.00		\$285.00										
	\$0.00	\$0.00	\$983.00	\$0.00	\$549.00	\$0.00	\$2,949.00	\$0.00	\$0.00	\$0.00	\$629.00	\$0.00	\$0.00	-\$3.00	-\$24.00
			\$983.00			\$549.00			\$2,949.00			\$629.00			-\$27.00
	Annual % Gain Combined		9.83%	Annual % Gain Combined		5.00%	Annual % Gain Combined		25.57%	Annual % Gain Combined		4.34%	Annual % Gain Combined		-0.18%
	HR, 4HR, Daily			HR, 4HR, Daily			HR, 4HR, Daily			HR, 4HR, Daily			HR, 4HR, Daily		



\$5,083.00 5 Year Profit
50.83% 5 Year Gain
(capital compounded annually)

AUDUSD

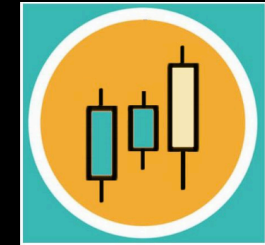
Engulfing Bar Trend

EA Risking 1% per Trade

\$10,000.00 Starting Balance

AUDUSD

	2014			2015			2016			2017			2018		
	HR	4HR	Daily	HR	4HR	Daily	HR	4HR	Daily	HR	4HR	Daily	HR	4HR	Daily
January				\$634.00		\$1,549.00			\$598.00						
February					-\$262.00			\$674.00							
March															
April				-\$69.00			\$570.00								
May				-\$80.00											
June															
July						\$1,055.00									
August															
September															
October	\$430.00														
November														-\$89.00	
December		\$573.00													
	\$430.00	\$573.00	\$0.00	\$485.00	-\$262.00	\$2,604.00	\$570.00	\$674.00	\$598.00	\$428.00	\$0.00	\$0.00	\$0.00	-\$89.00	\$0.00
	\$1,003.00			\$2,827.00			\$1,842.00			\$428.00			-\$89.00		
	Annual % Gain			Annual % Gain			Annual % Gain			Annual % Gain			Annual % Gain		
	10.03%			25.69%			13.32%			2.73%			-0.55%		
	Combined HR, 4HR, Daily			Combined HR, 4HR, Daily			Combined HR, 4HR, Daily			Combined HR, 4HR, Daily			Combined HR, 4HR, Daily		



\$6,011.00
60.11%

5 Year Profit
5 Year Gain
(capital compounded annually)

USDCHF

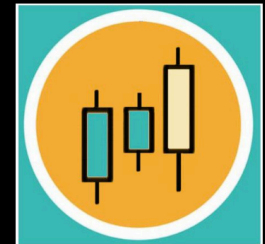
Engulfing Bar Trend

EA Risking 1% per Trade

\$10,000.00 Starting Balance

USDCHF

	2014			2015			2016			2017			2018		
	HR	4HR	Daily	HR	4HR	Daily	HR	4HR	Daily	HR	4HR	Daily	HR	4HR	Daily
January				\$460.00	\$1,050.00			\$3.00							
February				\$2.00											
March				\$399.00	\$1,630.00	\$581.00			-\$7.00						
April				\$172.00	\$27.00										
May				\$201.00	\$671.00		\$206.00	-\$80.00						\$18.00	
June							\$218.00	-\$3.00							
July															
August				\$156.00	\$3.00					-\$2.00	-\$5.00	-\$131.00			\$20.00
September												\$7.00			
October															
November					\$434.00	\$485.00						\$8.00			
December														-\$50.00	\$1,660.00
	\$0.00	\$0.00	\$0.00	\$1,390.00	\$3,815.00	\$1,066.00	\$424.00	-\$73.00	-\$7.00	-\$2.00	-\$5.00	-\$116.00	\$0.00	-\$32.00	\$1,680.00
	\$0.00			\$6,271.00			\$344.00			-\$123.00			\$1,648.00		
	Annual % Gain			Annual % Gain			Annual % Gain			Annual % Gain			Annual % Gain		
	0.00%			62.71%			2.11%			-0.74%			9.99%		
	Combined HR, 4HR, Daily			Combined HR, 4HR, Daily			Combined HR, 4HR, Daily			Combined HR, 4HR, Daily			Combined HR, 4HR, Daily		



\$8,140.00
81.40%

5 Year Profit
5 Year Gain
(capital compounded annually)

USDCAD

Engulfing Bar Trend

EA Risking 1% per Trade
\$10,000.00 Starting Balance
USDCAD

	2014			2015			2016			2017			2018		
	HR	4HR	Daily	HR	4HR	Daily	HR	4HR	Daily	HR	4HR	Daily	HR	4HR	Daily
January				\$564.00			\$359.00			\$533.00			-\$131.00		
February															
March					-\$119.00			\$724.00							
April					-\$7.00			-\$2.00		-\$188.00					
May							\$564.00	-\$124.00							
June							-\$103.00					-\$2.00	\$446.00		
July				\$388.00			-\$64.00				\$708.00				
August						\$608.00									
September						\$564.00						\$930.00			
October				-\$65.00											
November													-\$3.00		
December	-\$68.00				\$857.00										
	-\$68.00	\$0.00	\$0.00	\$887.00	\$731.00	\$1,172.00	\$756.00	\$598.00	\$0.00	\$345.00	\$708.00	\$928.00	\$312.00	\$0.00	\$0.00
			-\$68.00			\$2,790.00			\$1,354.00			\$1,981.00			\$312.00
	Annual % Gain Combined HR, 4HR, Daily			Annual % Gain Combined HR, 4HR, Daily			Annual % Gain Combined HR, 4HR, Daily			Annual % Gain Combined HR, 4HR, Daily			Annual % Gain Combined HR, 4HR, Daily		
	-0.68%			28.09%			10.64%			14.07%			1.94%		



\$6,369.00 5 Year Profit
63.69% 5 Year Gain
(capital compounded annually)

USDJPY

Engulfing Bar Trend

EA Risking 1% per Trade
\$10,000.00 Starting Balance
USDJPY

	2014			2015			2016			2017			2018		
	HR	4HR	Daily	HR	4HR	Daily	HR	4HR	Daily	HR	4HR	Daily	HR	4HR	Daily
January					\$198.00							-\$225.00			
February							\$121.00								
March						-\$88.00	-\$99.00		\$1,015.00				-\$20.00		\$326.00
April															
May															
June						-\$92.00		\$584.00							
July							\$173.00								
August					\$170.00		\$146.00			\$213.00	\$205.00				
September			\$357.00		-\$117.00			\$269.00							
October			\$295.00					-\$25.00							
November							\$201.00		\$504.00						
December	\$161.00						\$138.00	\$210.00	\$488.00					-\$104.00	
	\$161.00	\$0.00	\$652.00	\$0.00	\$251.00	-\$180.00	\$680.00	\$1,038.00	\$2,007.00	\$213.00	\$227.00	-\$225.00	\$0.00	-\$124.00	\$326.00
			\$813.00			\$71.00			\$3,725.00			\$215.00			\$202.00
	Annual % Gain Combined HR, 4HR, Daily			Annual % Gain Combined HR, 4HR, Daily			Annual % Gain Combined HR, 4HR, Daily			Annual % Gain Combined HR, 4HR, Daily			Annual % Gain Combined HR, 4HR, Daily		
	8.13%			0.66%			34.22%			1.47%			1.36%		



\$5,026.00 5 Year Profit
50.26% 5 Year Gain
(capital compounded annually)

AUDJPY

Engulfing Bar Trend

EA Risking 1% per Trade
\$10,000.00 Starting Balance
AUDJPY

	2014			2015			2016			2017			2018		
	HR	4HR	Daily	HR	4HR	Daily	HR	4HR	Daily	HR	4HR	Daily	HR	4HR	Daily
January				\$575.00			\$625.00								
February				-\$204.00		-\$5.00		\$189.00							
March		\$117.00													\$290.00
April						\$317.00									
May								-\$57.00							
June															
July				\$613.00	\$347.00	\$321.00	\$660.00	\$126.00							
August														-\$2.00	
September					\$227.00										
October															
November		\$122.00												\$40.00	
December									\$282.00						
	\$0.00	\$239.00	\$0.00	\$984.00	\$574.00	\$633.00	\$1,285.00	\$258.00	\$282.00	\$0.00	\$0.00	\$0.00	\$0.00	\$38.00	\$290.00
			\$239.00			\$2,191.00			\$1,825.00			\$0.00			\$328.00
	Annual % Gain Combined HR, 4HR, Daily			Annual % Gain Combined HR, 4HR, Daily			Annual % Gain Combined HR, 4HR, Daily			Annual % Gain Combined HR, 4HR, Daily			Annual % Gain Combined HR, 4HR, Daily		
	2.39%			21.40%			14.68%			0.00%			2.30%		



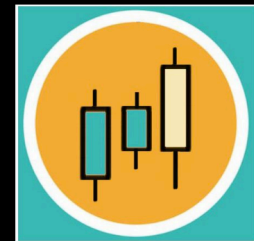
\$4,583.00 5 Year Profit
45.83% 5 Year Gain
(capital compounded annually)

GBPJPY

Engulfing Bar Trend

EA Risking 1% per Trade
\$10,000.00 Starting Balance
GBPJPY

	2014			2015			2016			2017			2018		
	HR	4HR	Daily	HR	4HR	Daily	HR	4HR	Daily	HR	4HR	Daily	HR	4HR	Daily
January															
February							\$67.00	\$1,270.00	\$577.00						-\$163.00
March								\$1,073.00							
April			-\$72.00				\$175.00		\$265.00						-\$162.00
May						\$237.00									
June					\$699.00	\$1,464.00	\$96.00		\$204.00						
July							\$787.00		\$313.00						
August								-\$198.00							\$270.00
September															
October															
November	\$170.00	\$250.00					\$180.00		\$372.00						
December			\$244.00					\$308.00	\$554.00						\$198.00
	\$170.00	\$250.00	\$172.00	\$0.00	\$699.00	\$1,701.00	\$1,305.00	\$2,453.00	\$2,285.00	\$0.00	\$0.00	\$0.00	\$0.00	\$0.00	\$143.00
			\$592.00			\$2,400.00			\$6,043.00			\$0.00			\$143.00
	Annual % Gain Combined HR, 4HR, Daily			Annual % Gain Combined HR, 4HR, Daily			Annual % Gain Combined HR, 4HR, Daily			Annual % Gain Combined HR, 4HR, Daily			Annual % Gain Combined HR, 4HR, Daily		
	5.92%			22.66%			46.51%			0.00%			0.75%		



\$4,301.00 5 Year Profit
43.01% 5 Year Gain
(capital compounded annually)

2014 Engulfing Bar Results Annually (Combined All Pairs, by Time Frame)			2015 Engulfing Bar Results Annually (Combined All Pairs, by Time Frame)			2016 Engulfing Bar Results Annually (Combined All Pairs, by Time Frame)			2017 Engulfing Bar Results Annually (Combined All Pairs, by Time Frame)			2018 Engulfing Bar Results Annually (Combined All Pairs, by Time Frame)		
Hourly	4HR	Daily	Hourly	4HR	Daily	Hourly	4HR	Daily	Hourly	4HR	Daily	Hourly	4HR	Daily
\$631.00	\$2,218.00	\$2,889.00	\$5,423.00	\$7,453.00	\$8,429.00	\$8,357.00	\$4,759.00	\$5,006.00	\$984.00	\$2,141.00	\$587.00	\$794.00	-\$318.00	\$3,938.00
Capital Gain % 57.38%			Capital Gain % 200.75%			Capital Gain % 147.31%			Capital Gain % 25.42%			Capital Gain % 26.78%		

Engulfing Bar Only Profit HR, 4HR, Daily 1% Risk
\$53,291.00